



# Gear Pumps

## PG Series

### 1PG Series

Constructed of an aluminum center housing and cast iron end plates, the Chief 1PG Series is a high-pressure hydraulic gear pump with seven displacement sizes from 0.07 to 0.35 in<sup>3</sup>/rev (1.3 to 8.0 cm<sup>3</sup>/rev).

The standard mounting flange is SAE AA-2 bolt; standard ports are SAE-08 inlet and SAE-06 outlet; and the shaft is a 1/2" diameter straight with 1/8" key.



### Mounting Installation

- Mounting flange: SAE AA - 2 Bolt
- Shaft: 1/2" Straight, 1/8" key
- Inlet port: SAE-08
- Pressure port: SAE-06
- Rotation: Clockwise (counterclockwise available)

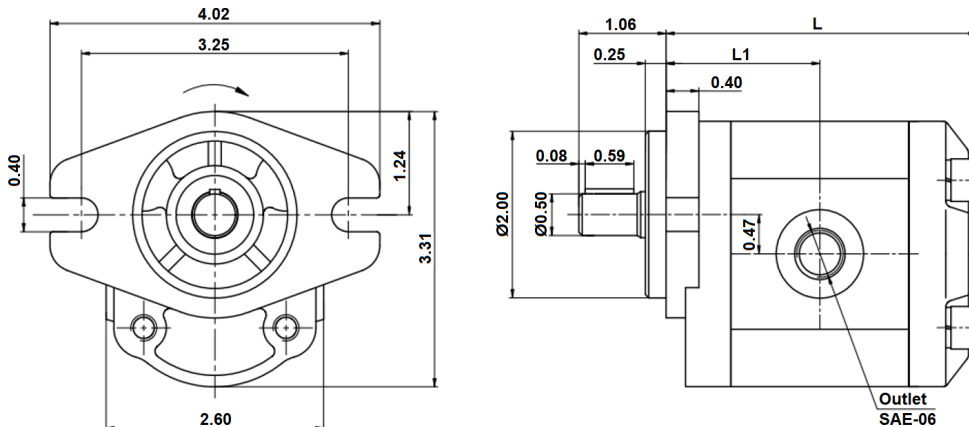
### Recommended working conditions:

- Filtration: 25 micron or better
- Oil Viscosity: 6 to 200 cSt
- Ambient Temperature: -8 to 130°F (-22 to 55°C)
- Oil Temperature: -12 to 175°F (-25 to 80°C)
- Inlet pressure 12 to 32 PSI absolute

### Model Codes and Specifications

Part No.	Model Code	Displacement in <sup>3</sup> (cm <sup>3</sup> ) / rev	Flow (GPM) @ 1800 rpm	Pressure (PSI)		Speed (RPM)		Dimensions (in)		Weight (lbs)
				Rated	Peak	Rated	Max	L	L1	
256300	GP10-13D-12KAA2	0.07 (1.3)	0.57	3625	4060	3000	4500	3.22	1.65	2.0
256302	GP10-21D-12KAA2	0.12 (2.1)	0.92	3625	4060	3000	4500	3.30	1.69	2.3
256304	GP10-27D-12KAA2	0.16 (2.7)	1.18	3625	4060	3000	4500	3.39	1.73	2.7
256306	GP10-32D-12KAA2	0.19 (3.2)	1.40	3625	4060	3000	4500	3.46	1.77	3.0
256308	GP10-42D-12KAA2	0.25 (4.2)	1.84	3625	4060	3000	4500	3.54	1.81	3.3
256310	GP10-48D-12KAA2	0.29 (4.8)	2.10	3625	4060	3000	4500	3.62	1.85	3.8
256312	GP10-58D-12KAA2	0.35 (5.8)	2.54	3625	4060	3000	4500	3.70	1.89	4.0

### Dimensions



## 2PG Series

Constructed of an aluminum center housing and cast-iron end plates, the Chief 2PG Series is a high-pressure hydraulic gear pump with nine displacement sizes from 0.24 to 1.52 in<sup>3</sup>/rev (4.0 to 25 cm<sup>3</sup>/rev).

The standard mounting flange is an SAE A-2 bolt; standard ports are an SAE-12 inlet and an SAE-10 outlet. The standard shaft has a 5/8" diameter straight and a 5/32" key. Additional shaft options are available.

### Mounting Installation

- Mounting flange: SAE A-2 Bolt
- Shaft: 5/8" Straight, 5/32" key
- Inlet port: SAE-12
- Pressure port: SAE-10
- Rotation: Clockwise (counterclockwise available)

### Recommended working conditions:

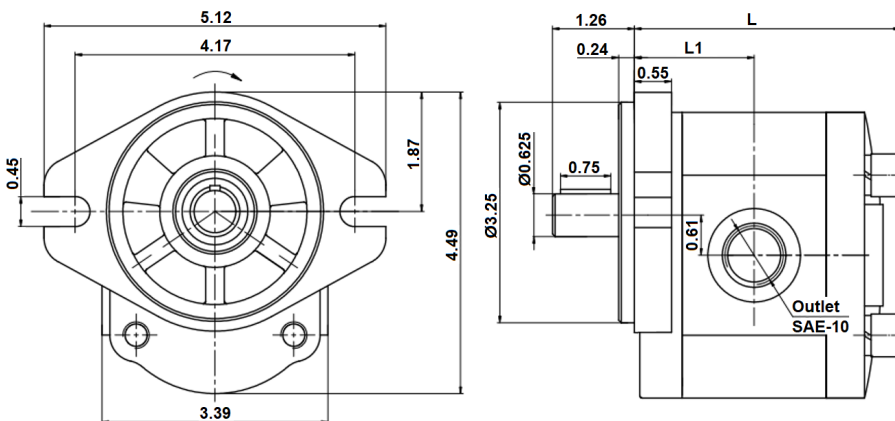
- Filtration: 25 micron or better
- Oil Viscosity: 6 to 200 cSt
- Ambient Temperature: -8 to 130°F (-22 to 55°C)
- Oil Temperature: -12 to 175°F (-25 to 80°C)
- Inlet pressure: 12 to 32 PSI absolute

### Model Codes and Specifications

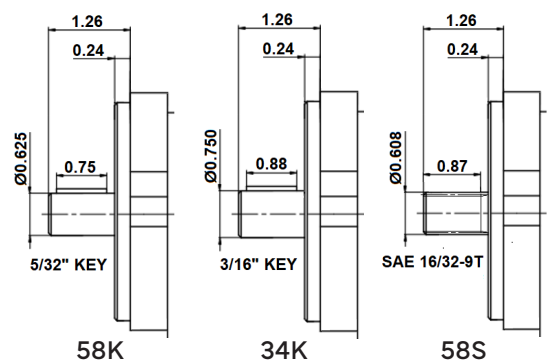
Part No.	Model Code	Displacement in <sup>3</sup> (cm <sup>3</sup> ) / rev	Flow (GPM) @ 1800 rpm	Pressure (PSI)		Speed (RPM)		Dimensions (in)		Weight (lbs)
				Rated	Peak	Rated	Max	L	L1	
256320	GP20-04D-58KA2	0.24 (4.0)	1.75	3625	4060	2000	3500	3.78	1.70	7.8
256322	GP20-06D-58KA2	0.36 (6.0)	2.65	3625	4060	2000	3500	3.86	1.77	8.1
256324	GP20-08D-58KA2	0.48 (8.0)	3.50	3625	4060	2000	3500	4.02	1.83	8.2
256326	GP20-10D-58KA2	0.61 (10.0)	4.40	3625	4060	2000	3500	4.09	1.89	8.3
256328	GP20-12D-58KA2	0.73 (12.0)	5.25	3625	4060	2000	3500	4.25	1.97	8.5
256330	GP20-14D-58KA2	0.85 (14.0)	6.15	3625	4060	2000	3500	4.33	2.00	8.7
256332	GP20-16D-58KA2	0.97 (16.0)	7.00	3625	4060	2000	3500	4.49	2.09	8.9
256334	GP20-20D-58KA2	1.22 (20.0)	8.75	3625	4060	2000	3500	4.72	2.20	9.3
256336	GP20-25D-58KA2	1.52 (25.0)	11.0	2320	2900	2000	3000	5.04	2.36	9.8



### Dimensions



### Shafts Available



## 3PG Series

Constructed of an aluminum center housing and cast-iron end plates, the Chief 3PG Series is a high-pressure hydraulic gear pump with seven displacement sizes from 1.34 to 3.66 in<sup>3</sup>/rev (4.0 to 25 cm<sup>3</sup>/rev).

The standard mounting flange is SAE B-2 bolt, and the standard shaft is a 7/8" diameter straight with a 1/4" key. Additional shaft options are available.

### Mounting Installation

- Mounting flange: SAE B-2 Bolt
- Shaft: 7/8" Straight, 1/4" Key
- Rotation: Clockwise (counterclockwise available)

### Recommended working conditions:

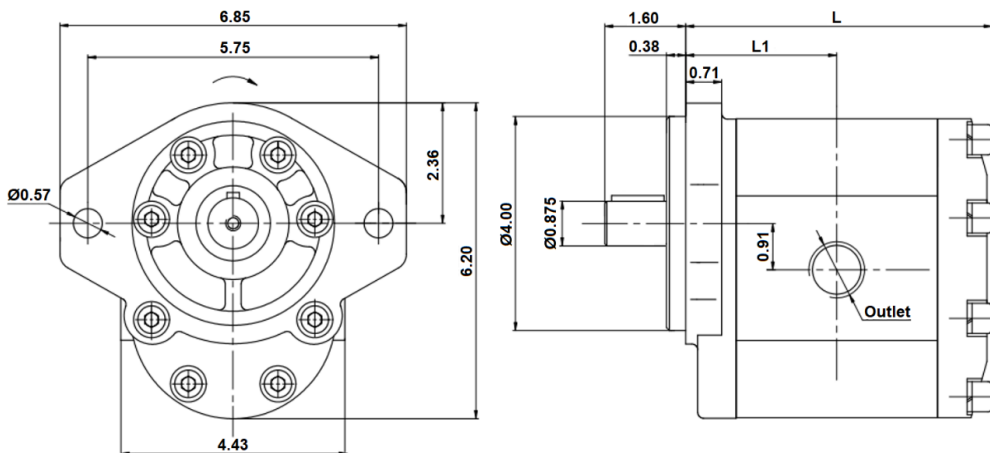
- Filtration: 25 micron or better
- Oil Viscosity: 6 to 200 cSt
- Ambient Temperature: -8 to 130°F (-22 to 55°C)
- Oil Temperature: -12 to 175°F (-25 to 80°C)
- Inlet pressure 12 to 32 PSI absolute

### Model Codes and Specifications

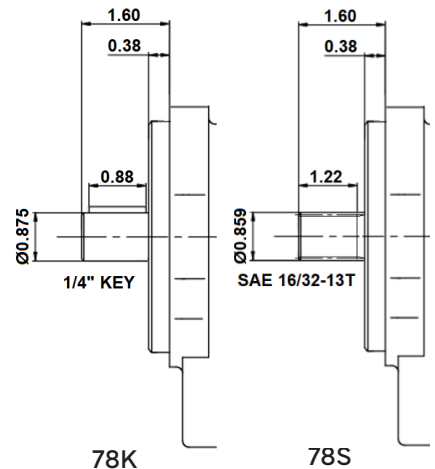
Part No.	Model Code	Displacement in <sup>3</sup> (cm <sup>3</sup> ) / rev	Flow (GPM) @ 1800 rpm	Pressure (PSI)		Speed (RPM)		Dimensions (in)		Port Size		Weight (lbs)
				Rated	Peak	Rated	Max	L	L1	Inlet	Outlet	
256500	GP30-22D-78KB2	1.34 (22)	9.6	3625	4060	2000	3000	5.16	2.60	SAE-16	SAE-12	19.0
256502	GP30-26D-78KB2	1.59 (26)	11.4	3625	4060	2000	3000	5.27	2.63	SAE-16	SAE-12	19.5
256504	GP30-34D-78KB2	2.07 (34)	14.9	3625	4060	2000	3000	5.47	2.71	SAE-16	SAE-12	20.2
256506	GP30-39D-78KB2	2.38 (39)	17.0	3625	4060	2000	3000	5.62	2.79	SAE-16	SAE-12	20.6
256508	GP30-43D-78KB2	2.62 (43)	18.8	3625	4060	2000	2800	5.78	2.87	SAE-16	SAE-12	20.8
256510	GP30-51D-78KB2	3.11 (51)	22.3	3625	4060	2000	2400	5.98	2.99	SAE-20	SAE-16	21.5
256512	GP30-60D-78KB2	3.66 (60)	26.3	2610	3335	2000	2400	6.22	3.11	SAE-20	SAE-16	22.2



### Dimensions



### Shafts Available



## MVP Program

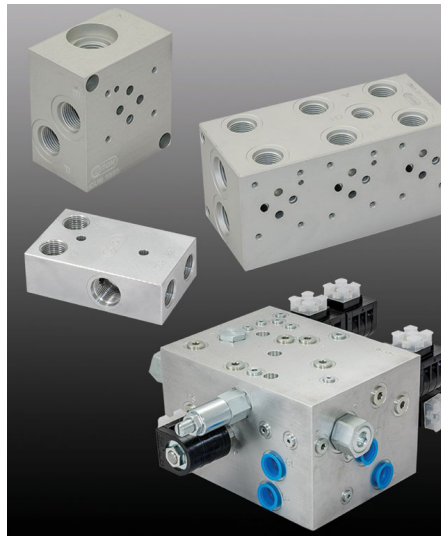
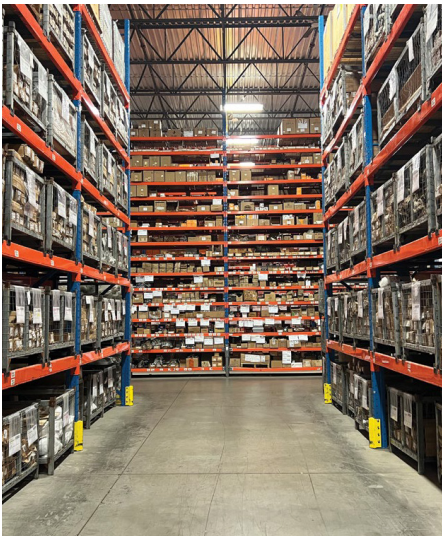


Bailey's MVP (Motors, Manifolds, Valves and Pumps) Program brings together an extensive scope of products and services. We offer rapid configurations, conversions and customization of hydraulic products, including manifold and valve system design and fabrication capabilities.

We are dedicated to providing OEMs, dealers, distributors and repair houses expert support and quick turnaround options for common, hard-to-find and specialized products. With industry-leading configuration, conversion, customization, design and fabrication capabilities, the Bailey MVP Program can provide shorter lead times when compared to competitor services.

## Expertise & Service

The MVP team is comprised of product specialists, engineers and system designers that work with our customers. Our experts guide the process of determining specifications for the desired component, then developing solutions to best fit your application. This ensures the motor, manifold, valve or pump is configured to suit your exact needs.



1-800-800-1810  
hydraulicsales@baileyintl.com  
baileyintl.com

**BAILEY**<sup>TM</sup>