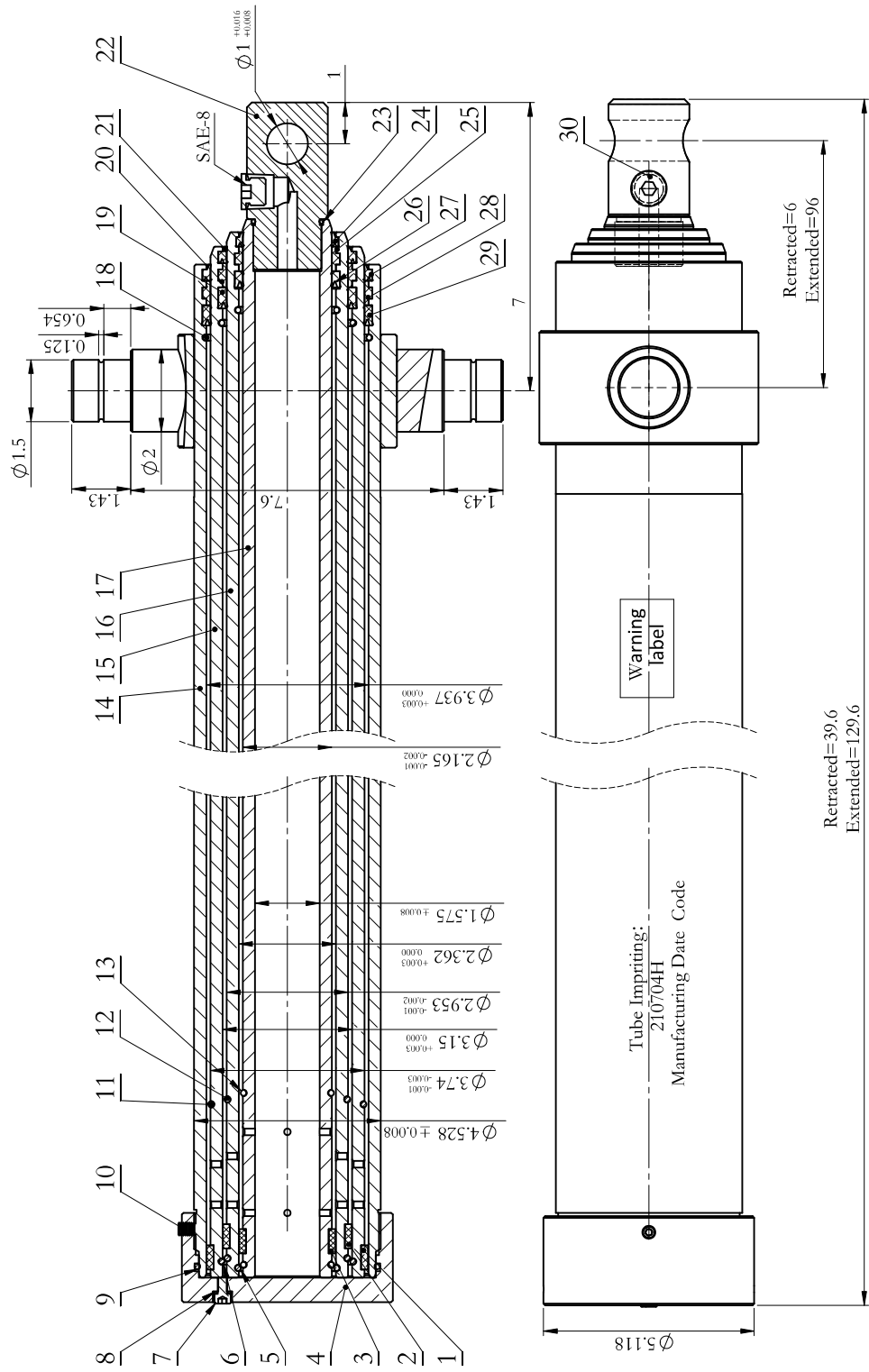


DIMENSION	TOLERANCE	UNFINISHED		FINISHED	
		M	H/NED	M	H/NED
0.5 < L ≤ 6	±0.1	±0.2	±0.1	±2.0	±2.0
6 < L ≤ 30	±0.2	±0.3	±0.2	±2.5	±2.5
30 < L ≤ 100	±0.3	±0.5	±0.5	±2.5	±2.5
100 < L ≤ 200	±0.5	±0.8	±0.8	±2.5	±2.5
200 < L ≤ 1000	±1.0	±1.0	±1.0	±2.5	±2.5
1000 < L ≤ 2000	±1.5	±1.5	±1.5	±2.5	±2.5
L > 2000	±2.0	±2.0	±2.0	±2.5	±2.5



Parts List			Seal List		
Parts NO	Description	Qty	Parts NO	Description	Qty
30	Plug	1	29	BS Seal	1
22	Rod end Collar	1	28	Back-up Ring	1
17	4rd stage Tube	1	27	Wiper	1
16	3rd stage Tube	1	26	BS Seal	1
15	2nd stage Tube	1	25	Back-up Ring	1
14	Outer Tube Assembly	1	24	Wiper	1
13	Collar	2	23	O-ring	1
12	Collar	1	21	Wiper	1
10	Hexagon Set Screw	1	20	Back-up Ring	1
9	Collar	1	19	BS Seal	1
8	Washer	1	3	Wearing Band	1
7	Bleeder	1	2	Wearing Band	1
6	Collar	2	1	Wearing Band	1
5	Collar	2			
4	Rear Cap	1			

Note

- Telescopic Cylinder
- IDI: $\Phi 100\text{mm}$, ID2: $\Phi 80\text{mm}$, ID3: $\Phi 60\text{mm}$
- ROD1: $\Phi 95\text{mm}$, ROD2: $\Phi 75\text{mm}$, ROD3: $\Phi 55\text{mm}$
- Stroke: 90";
- Working Pressure: 2500psi, Testing Pressure: 3750psi;
- Port: 8#SAE;
- Paint: Black top coat over primer.

TITLE				TELESCOPIC CYLINDER			
DESIGNED BY		CHECKED BY		DRAWN BY		DATE	
Caesar		171117		--		210704	
APPROVED BY		DATE		SUBJECT		REFERENCE NO	
STANDARDIZED BY		DATE		WEIGHT		QUANTITY	
				0.0		1:2	
REVISION		SCALE		REDUCED		SUBJECT	